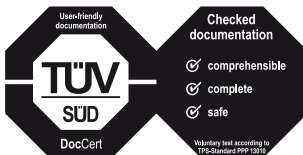




IMPRESSA Z5 – Generation II

Quick Reference Guide



The 'IMPRESSA Manual' together with these short instructions 'IMPRESSA Z5 – Quick Reference Guide' has been awarded the seal of approval by the independent German Technical Inspection Agency, TÜV SÜD, due to its easy-to-understand style, its thoroughness and coverage of safety aspects.



These short instructions do not replace the 'IMPRESSA Z5 – Generation II Manual'. Make sure you read and observe the safety information and warnings first in order to avoid hazards.

Switching on

When the IMPRESSA is Switched on, a prompt for the rinse operation automatically appears which is initiated by pressing the maintenance button ☸.

Precondition: Your IMPRESSA is Switched on at the power Switch and the On/Off button ⏻ is illuminated (standby).

- ▶ Press the On/Off button to Switch the IMPRESSA on.

WELCOME TO JURA

UNIT IS HEATING

PRESS RINSE, the maintenance button ☸ lights up.

- ▶ Place a receptacle under the coffee spout.
- ☸ ▶ Press the maintenance button.
The machine rinses itself, stopping automatically.
COFFEE READY appears on the display. Your IMPRESSA is ready to use.



Latte macchiato



Your IMPRESSA prepares a latte macchiato at the touch of a button.

Example: This is how to prepare a latte macchiato.

Precondition: COFFEE READY is shown on the display.

- ▶ Remove the milk pipe from the packaging of the vacuum milk container. For a milk carton/bottle use the long pipe, for the vacuum milk container the short pipe.
- ▶ Attach the milk pipe to the nozzle.
- ▶ Insert the other end in a milk carton/bottle or connect it to the vacuum milk container.



- ▶ Place a glass under the cappuccino nozzle.
 - ▶ Turn the selection lever of the nozzle to the milk foam position .
- i** To enable the typical layers of a Latte Macchiato to form even more effectively, add 10 ml of cool milk to the glass before preparing this speciality.
- i** You can refine your Latte Macchiato even more by also adding a little flavoured syrup to the glass as well.
-  ▶ Press the Latte Macchiato button.
- 1 LATTE MAC., and the coffee strength is displayed.
- 1 LATTE MAC. / MILK, the milk foam is being prepared.
- The operation stops automatically after reaching the pre-set amount of milk.
- 1 LATTE MAC.
- i** A brief interval follows during which the hot milk separates from the milk foam. This enables the formation of the typical layers of a latte macchiato. The duration of this interval can be defined in programming mode.
- 1 LATTE MAC. / COFFEE, coffee preparation starts.
- Preparation stops automatically after reaching the pre-set amount of water. COFFEE READY is shown on the display.






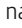
To ensure that the cappuccino nozzle works perfectly, you should rinse and clean it regularly. The descriptions can be found in the 'Cappuccino nozzle' section.

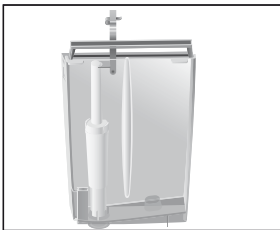
Using and activating filter



Your IMPRESSA no longer has to be descaled if you use the CLARIS plus filter cartridge.

- i** Perform the 'Insert filter' operation without interruption. This will ensure that your IMPRESSA always produces its best.

Precondition: COFFEE READY is shown on the display.

-  ▶ Keep the Rotary Switch pressed **until** MAINTENANCE appears on the display.
-  ▶ Turn the Rotary Switch until FILTER I.F.W.S. is displayed.
-  ▶ Press the Rotary Switch to enter the programme item.
FILTER NO
-  ▶ Turn the Rotary Switch until FILTER YES is displayed.
-  ▶ Press the Rotary Switch to confirm the setting.
CONFIRMED ✓ appears briefly on the display to confirm the setting.
INSERT FILTER / PRESS BUTTON, the maintenance button  lights up.
- ▶ Remove a CLARIS plus filter cartridge and the filter cartridge extension from the Welcome Pack.
- ▶ Place the extension on top of the filter cartridge.
- ▶ Remove the water tank and empty it.
- ▶ Lift the cartridge holder and insert the filter cartridge into the water tank, applying slight pressure.
- ▶ Close the cartridge holder. It will click into place audibly.
- ▶ Fill the water tank with fresh, cold water and reinsert.



- ▶ Place a receptacle (containing at least 500 ml) under the cappuccino nozzle.
- ▶ Turn the selection lever of the nozzle to the steam position .
-  ▶ Press the maintenance button.
FILTER RINS., water will flow out of the nozzle.

- i** You can interrupt filter rinsing at any time by pressing any button.
- i** The water may be slightly discoloured. This is not harmful to health and does not affect the taste.

Filter rinsing stops automatically after approx. 500 ml. **COFFEE READY** appears on the display. The filter is now activated.

Filter change

- i** After 50 litres of water have flowed through the filter, or after two months, its capacity is reached. Your IMPRESSA will automatically prompt you to change the filter.
- i** If the CLARIS plus filter cartridge is not activated, you will not be prompted to change the filter.

To change the CLARIS plus filter cartridge when prompted to do so by your IMPRESSA, proceed as follows:

Precondition: **COFFEE READY / FILTER CHANGE** is displayed and the maintenance button **⚙** lights up.

- ⚙** ▶ Press the maintenance button.

CHANGE TIME 2 MIN / START YES

- i** If you want to change the filter at a later point in time, turn the Rotary Switch until **CHANGE / START NO** is displayed. Exit the maintenance programme by pressing the Rotary Switch. The prompt 'change filter' remains on the display.

- ⚙** ▶ Press the maintenance button.

INSERT FILTER / PRESS BUTTON

- ▶ Remove the water tank and empty it.
- ▶ Open up the cartridge holder and remove the old CLARIS plus filter cartridge and the extension.
- ▶ Fit the extension on top of a new CLARIS plus filter cartridge.



- ▶ Insert the filter cartridge into the water tank, exerting slight pressure.
- ▶ Close the cartridge holder. It will click into place audibly.
- ▶ Fill the water tank with fresh, cold water and reinsert.



- ▶ Place a receptacle (containing at least 500 ml) under the cappuccino nozzle.
- ▶ Turn the selection lever of the nozzle to the steam position ↓.
- ⚠ ▶ Press the maintenance button.
FILTER RINS., water flows from the nozzle.

- i** You can interrupt filter rinsing at any time. To do this, press any button.
- i** The water may be slightly discoloured. This is not harmful to health and does not affect the taste.

Filter rinsing stops automatically after approx. 500 ml. Your IMPRESSA heats up and is once again ready to use.

Clean machine

After 220 coffee preparations or 80 Switch-on rinses, the IMPRESSA will prompt you to clean it.

CAUTION

If the wrong cleaning agent is used, the machine could be damaged and/or traces of detergent could be left behind in the water.

- ▶ Use only original JURA care products.

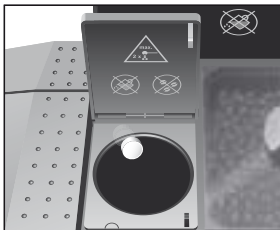
- i** The cleaning programme only lasts about 20 minutes.
- i** Do not interrupt the cleaning programme. The quality of cleaning will be impaired if you do so.
- i** JURA cleaning tablets are available from stockists.

Precondition: **COFFEE READY / CLEAN** is displayed and the maintenance button ⚠ lights up.

- ⚠ ▶ Press the maintenance button.

CLEANING TIME 20 MIN / START YES

- i** If you want to clean the machine at a later point in time, turn the Rotary Switch until **CLEANING / START NO** is displayed. Exit the maintenance programme by pressing the Rotary Switch. The prompt ‘clean machine’ remains on the display.



- ❖ ▶ Press the maintenance button.
TRAY / GROUND EMPTY
- ▶ Empty the drip tray and coffee grounds container and put them back into the machine.
PRESS BUTTON, the maintenance button ❖ lights up.
- ▶ Place a receptacle under the coffee spout and the cappuccino nozzle.
- ❖ ▶ Press the maintenance button.
MACHINE IS CLEANING, water flows out of the coffee spout.
The process is interrupted, **ADD TABLET**.
- ▶ Open the cover of the bean container.
- ▶ Open the cover of the filler funnel for pre-ground coffee.
- ▶ Insert a JURA cleaning tablet into the filler funnel.
- ▶ Close the cover of the filler funnel and the cover of the bean container.
PRESS BUTTON, the maintenance button ❖ lights up.
- ❖ ▶ Press the maintenance button.
MACHINE IS CLEANING, water flows out of the coffee spout and the cappuccino nozzle several times.
The process is interrupted **TRAY / GROUND EMPTY**.
- ▶ Empty the drip tray and coffee grounds container and put them back into the machine.
The cleaning operation is now complete. The IMPRESSA is once more ready for use.

Descale machine



The IMPRESSA builds up deposits of limescale over time and automatically prompts you to descale it when necessary. The degree of calcification depends on the degree of hardness of your water.

If the descaling agent comes into contact with the skin or eyes, this can cause irritation.

- ▶ Avoid contact with the skin or eyes.
- ▶ Rinse the descaling agent off with clean water. Should you get any descaling agent in your eye, consult a doctor.

CAUTION

If the wrong descaling agent is used, the machine could be damaged and/or traces of detergent could be left behind in the water.

- ▶ Use only original JURA care products.

CAUTION

If the descaling operation is interrupted, there may be damage to the machine.

- ▶ Allow the descaling programme to run to the end.

CAUTION

If the descaling agent comes into contact with sensitive surfaces, damage cannot be ruled out.

- ▶ Clean up any splashes immediately.

-
- i** The descaling programme lasts approx. 45 minutes.
 - i** JURA descaling tablets are available from stockists.
 - i** If you use a CLARIS plus filter cartridge and this is activated, you will not be prompted to change the filter.

Precondition: COFFEE READY / DESCALE is displayed and the maintenance button ☼ lights up.

- ☼ ▶ Press the maintenance button.

DECALCIFYING TIME 45 MIN / START YES

- i** If you want to descale the machine at a later point in time, turn the Rotary Switch until DECALCIFYING / START NO is displayed. Exit the maintenance programme by pressing the Rotary Switch. The prompt 'Descale machine' remains on the display.

- ⚠ ▶ Press the maintenance button.

TRAY / GROUNDS EMPTY

- ▶ Empty the drip tray and coffee grounds container and put them back into the machine.

SOLVENT IN TANK

- ▶ Remove the water tank and empty it.
- ▶ Completely dissolve the contents of one blister (3 JURA descaling tablets) in a container that holds 600 ml of water. This may take several minutes.
- ▶ Pour the solution into the empty water tank and insert it in the machine.

SOLVENT IN TANK / PRESS BUTTON, the maintenance button ⚠ lights up.

- ▶ Remove the cappuccino nozzle.

- ▶ Place a receptacle under the hot water spout and the connector of the nozzle.

- ⚠ ▶ Press the maintenance button.

MACHINE IS DECALCIFING

Water flows from the hot water spout and the connector of the nozzle. The maintenance button ⚠ blinks during the descaling operation.

The process stops automatically, TRAY / GROUNDS EMPTY.

- ▶ Empty the receptacles below the hot water spout and the connector of the nozzle.

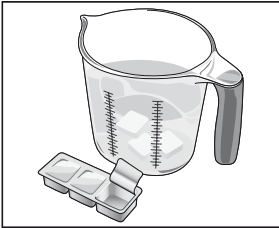
- ▶ Empty the drip tray and coffee grounds container and put them back into the machine.

WATER TANK FILL

- ▶ Remove the water tank and rinse it thoroughly.
- ▶ Fill the water tank with fresh, cold mains water and reinsert.

PRESS BUTTON, the maintenance button ⚠ lights up.

- ▶ Replace the cappuccino nozzle.





- ▶ Place a receptacle under the hot water and coffee spout and the cappuccino nozzle.
- ⚡ ▶ Press the maintenance button.
MACHINE IS DECALCIFYING, water flows out of the hot water spout and the cappuccino nozzle.
UNIT IS HEATING, RINSING water flows out of the coffee spout.
The process stops automatically, **TRAY / GROUNDS EMPTY**.
- ▶ Empty the drip tray and coffee grounds container and put them back into the machine.
The descaling operation is now complete. Your IMPRESSA heats up and is once again ready to use.

i If the descaling operation stops unexpectedly, rinse the water tank thoroughly.

Rinse cappuccino nozzle

Each time milk has been prepared the IMPRESSA displays a prompt for cappuccino rinsing.

Precondition: **COFFEE READY / CAPPU RINSE** is shown on the display, the maintenance button ⚡ lights up.

- ▶ Place a receptacle under the cappuccino nozzle.
- ▶ Turn the selection lever of the nozzle to the steam position ⚡.
- ⚡ ▶ Press the maintenance button.
CAPPUCCINO RINSING, the cappuccino nozzle is rinsed.
The procedure stops automatically. **COFFEE READY** appears on the display.



Clean cappuccino nozzle

To ensure that the cappuccino nozzle works perfectly, you should clean it **daily** when you have been preparing milk.

CAUTION

If the wrong cleaning agent is used, the machine could be damaged and/or traces of detergent could be left behind in the water.

- ▶ Use only original JURA care products.
-

- i** The IMPRESSA will not prompt you to clean the cappuccino nozzle.
- i** The JURA Auto-Cappuccino Cleaner is available from stockists.

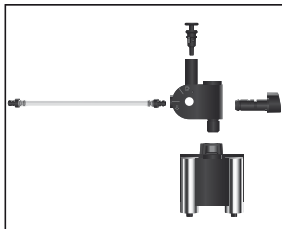
Precondition: **COFFEE READY** is shown on the display.

- 🕒 ▶ Keep the Rotary Switch pressed **until MAINTENANCE** appears.
- 🕒 ▶ Press the Rotary Switch to enter the programme item. **CAPPUCCINO CLEANING**
- 🕒 ▶ Press the Rotary Switch. **CLEANER FOR CAPPUCCINO / PRESS BUTTON**
 - ▶ Pour 250 ml of fresh water into a container and add one capful (max. 15 ml) of Auto-Cappuccino Cleaner.
 - ▶ Immerse the milk pipe in the receptacle.
 - ▶ Turn the selection lever to the milk foam position ☕ or milk 🍵.
 - ▶ Place another receptacle under the cappuccino nozzle.
- ⚠ ▶ Press the maintenance button. **CAPPUCCINO CLEANING**, the nozzle and pipe are cleaned. **WATER FOR CAPPUCCINO / PRESS BUTTON**
 - ▶ Rinse the receptacle thoroughly, fill it with approx. 250 ml of fresh water and immerse the milk pipe in the water.
 - ▶ Empty the receptacle and place it under the nozzle once more.
- ⚠ ▶ Press the maintenance button. **CAPPUCCINO CLEANING**, the nozzle and pipe are rinsed with fresh water. **COFFEE READY** appears on the display. Your IMPRESSA is once more ready to use.



IMPRESSA Z5 – Quick Reference Guide

Dismantle and rinse the cappuccino nozzle



- ▶ Carefully pull off the cappuccino nozzle.
- ▶ Dismantle the cappuccino nozzle completely.
- ▶ Rinse all the nozzle parts thoroughly under running water.
- ▶ Reassemble the cappuccino nozzle and attach it once more to the connector.